

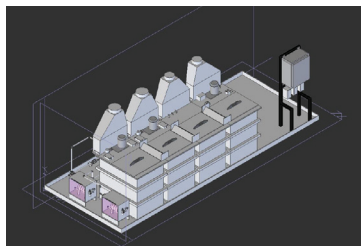
CaseStudy



Burt Process Equipment Incorporates SIMONA® Polypropylene and Kynar® PVDF Sheet to Develop Easy-to-Maintain Plastic Passivation Line



BurtProcess.com



Hitchiner had an existing passivation line system that was outdated, rusting, unsafe, and difficult to work on. The customer wanted a system that emulated the same process as the existing system but addressed these problems.

Initial Situation

The existing passivation line was fabricated out of steel and stainless steel components, which rusted over time. The old system design was not created with safety and ergonomics in mind. Hitchiner wanted a safe, easy to use system that was fabricated out of plastic to prevent rusting.

Task

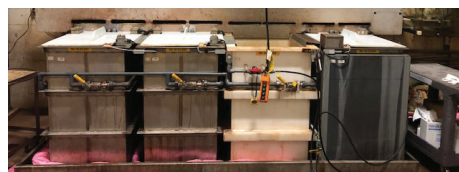
There were no special certifications or approvals needed to fabricate a new passivation line. However, some of the chemicals used on the line required Kynar® PVDF material for extra chemical compatibility. Burt Process Equipment was able to fabricate a new system while primarily using SIMONA® PP-H sheet. This material is widely used, offers a high strength-to-weight ratio, and is stiffer and stronger than copolymer. SIMONA® PVC-Glas was also used as a clear accessible window at the ends of the passivation line.

Solution

Combined with good chemical resistance and weldability, SIMONA® PP-H sheet is used in many corrosion-resistant applications. By using this sheet, the technicians at Burt Process Equipment were able to produce a simple to maintain passivation line system that was much easier to work on in the field.

Burt Process Equipment mentioned the use of SIMONA brand as always having been reliable and durable, therefore it was chosen to complete the project for Hitchiner.

Before



After



The project at a glance

Project

Easy-to-maintain plastic passivation line for Hitchiner

Requirements

- Ease of maintenance
- Easy to clean
- No rusting or decay
- Reliability
- Rigidity

Fabricator

- Burt Process Equipment

Customer

- Hitchiner

Technical Consultants

- Lord Tamas | Process Engineer (Burt Process)
- Chris Art | Vice President of Sales (SIMONA AMERICA Industries)
- Karl Palermo | Manager (Hitchiner)

Products Used

- SIMONA® PP-H sheet
- Kynar® PVDF 740
- SIMONA® PVC-Glas

Further information

SIMONA AMERICA Industries LLC.

101 Power Boulevard

Archbald PA 18403

Phone +1 866 501 2992

Fax +1 800 522 4857

Burt Process Equipment

100 Overlook Dr,

Hamden, CT 06514

burtprocess.com

Hitchiner

594 Elm Street,

Milford, NH 03055

hitchiner.com